


# PARATRIATHLÓN EUROPEAN CHAMPIONSHIP

PTS Y PTVI

 **SWIM - 750 m**  
(1 LAPS)

 **BIKE - 20 km**  
(1 LAPS)

 **RUN- - 5 km**  
(2 LAPS)

 **BIKE**

 **RUN**

T1

T2

 **SWIM**

ATHLETES VILLAGE


Image © 2022 Maxar Technologies

1985

40°25'53.10" N 3°45'10"



**PARATRIATHLÓN**  
**EUROPEAN CHAMPIONSHIP**  
**PTS Y PTVI - SWIM**

 **SWIM - 750 m**  
**(1 LAP)**





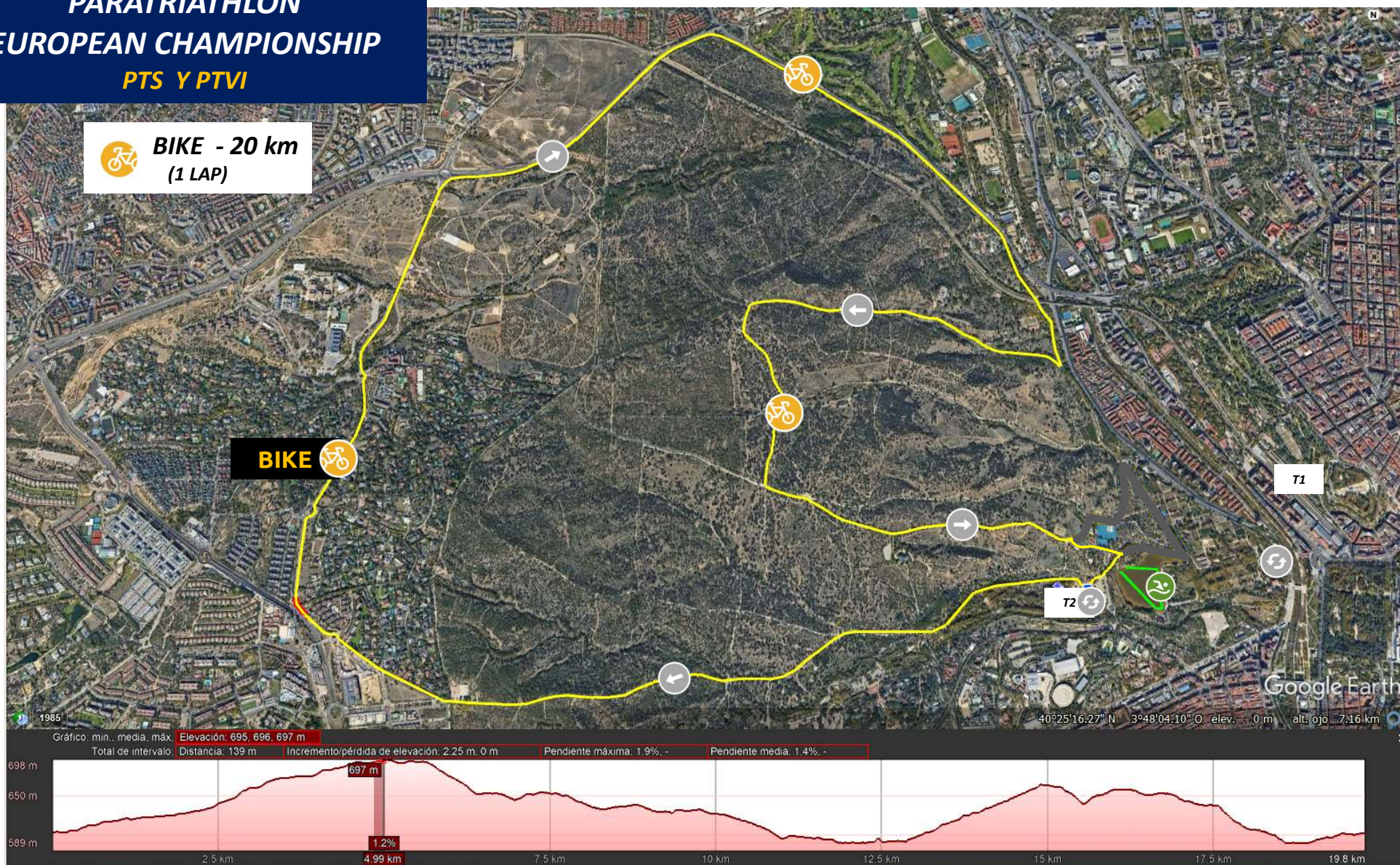
# PARATRIATHLÓN EUROPEAN CHAMPIONSHIP

PTS Y PTVI



**BIKE - 20 km**  
(1 LAP)

**BIKE**





# PARATRIATHLÓN EUROPEAN CHAMPIONSHIP 2# TRANSITION, RUN & FINISH AREA

 **RUN- - 5 km**  
(2 LAPS)

BIKE 


BIKE IN 

FINISH AREA

FINISH

START LAPS

WATER 

RUN OUT 

 **RUN**





**PARATRIATHLÓN**  
**EUROPEAN CHAMPIONSHIP**  
*SWIM, T1 & T2*

