

RÉGION
BOURGOGNE
FRANCHE
COMTÉ

Doubs
Département

Ville de
Besançon

Grand
Besançon
Métropole

FRANCAIS
NATURE

CA
FRANCHE-COMTÉ

13^e édition

15 Juin

- Jeunes 8-11 ans
- Triathlon XS Open
- Para Open
- World Triathlon Para-Cup

16 Juin

- Triathlon S relais ou individuel
- CLM par équipe distance M

15-16 JUIN 2024

TRIATHLON

VAUBAN BESANÇON



**les lacs
d'Osselle**



World Triathlon
Para Cup
BESANÇON
2024



www.besancon-triathlon.fr

tri

BESANÇON TRIATHLON
ORGANISATION

GENERAL INFORMATION

WELCOME

Welcome to the World Triathlon Para Cup Besançon 2024.

The purpose of this guide is to ensure that all athletes, officials and interested parties are well informed about all procedures concerning the race.

Please keep in mind that this information can change and the final race information will be provided to the athletes and the team managers at the athletes' briefing.

This guide does not deal with all measures related to health conditions due to Covid 19. The Covid-19 concept paper document will be uploaded on the triathlon.org event web page.

Please note this version is subject to change.

Key Paratriathlon Links:

- > World Triathlon Para Cup Besançon 2024 event website on <https://besancon-triathlon.fr/triathlon-vauban/>
- > World Triathlon Website: https://triathlon.org/events/event/2024_world_triathlon_para_cup_besancon
- > For the latest news and photos internationally find and like the World Triathlon on Facebook and Twitter

BESANCON - PARIS 2024 GAMES PREPARATION CENTER



To succeed in these Olympic Games, Besançon is identified as a Games Preparation Center in 20 sports disciplines, including Triathlon and Para-triathlon.

Preparing for the Games in Besançon means ensuring that you complete an internship in the best conditions in order to produce optimal performance in the Olympics race.

All our teams are ready to welcome you and all the technical details are available on www.terredechampions.besancon.fr

Paratriathlon : <https://terredechampions.besancon.fr/discipline/triathlon-paralympique/>

Triathlon : <https://terredechampions.besancon.fr/discipline/triathlon-2/>

GRANDES HEURES NATURE - EKIDEN

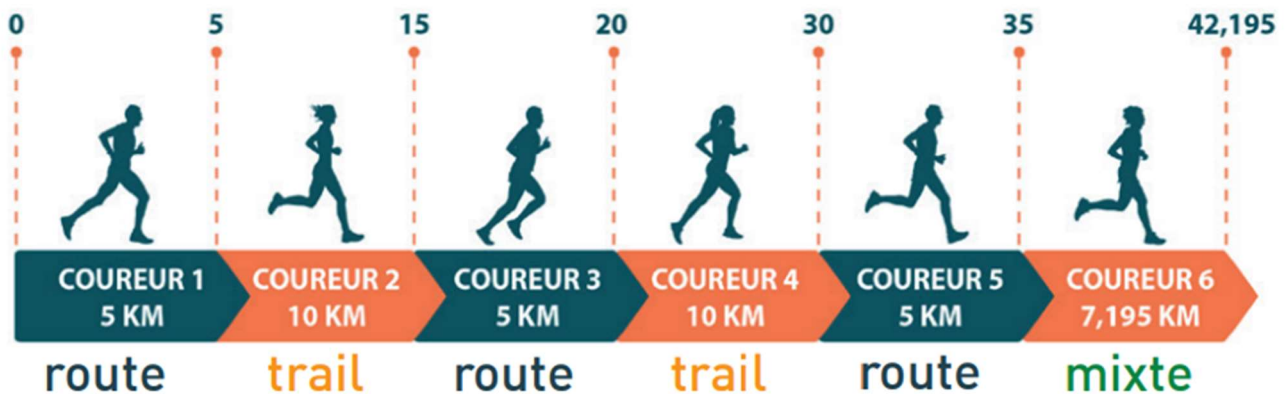
This year the triathlon is part of the **Grandes Heures Nature Festival**.

During this festival an Ekiden is organized on Friday evening near the site of the Pasta Party.

The Ekiden is a marathon - that is 42km -, which is run in relay by team of 6.

3 loops, 2 different types of terrain to enjoy the natural landscapes of the hills and the loop of the Doubs, as well as the town center of Besançon: 5 km on the road, 10 km on the trail and 7.2 km mixed trail/road. The departure at 7 p.m. from Chamars will offer a sunset visible from the forts, all in a festive and friendly atmosphere!

Team of 6 people – 3 loops – 2 types of terrain



Registration is offered by the organization, if coaches or accompanying persons wish to participate: send an email to david.travadon@sfr.fr with names and medical certificates.

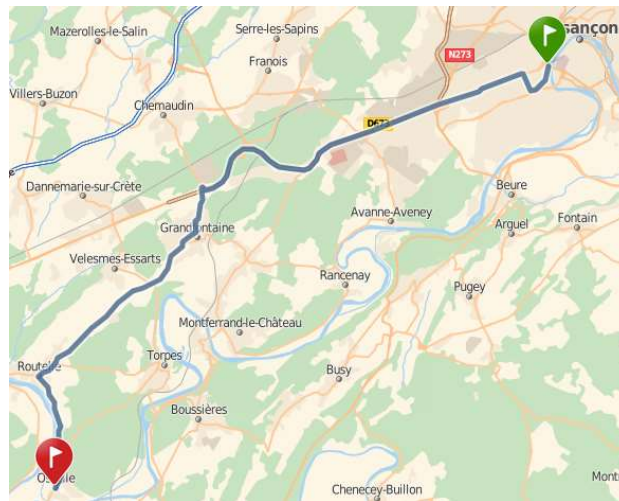
Route : <https://tracedetail.fr/fr/trace/trace/207724>

KEY DATES

Friday June 14th		
Course Familiarization	13h00 Bus from Ibis Hotel 14h00 Bike Familiarization 15h00 Swim Familiarization 16h00 Bus to Ibis Hotel	Venue - Osselle
Athlete Presentation	17h30	Esplanade Chamars
Entry Fee payment	18h00 (Cash Only)	Centre Diocésain
Briefing	18h30	
Athlete Registration Race Package	19h30	
Pasta Party	19h45	

Saturday June 15th			
Start Race	1. 14:15:00	PTS5 M	Venue - Osselle
	2. 14:20:00	PTVI1 M	
	3. 14:22:41	PTVI2/3 M (+2:41)	
	4. 14:24:00	PTVI1 W	
	5. 14:27:11	PTVI2/3 W (+3:11)	
	6. 14:35:00	PTS5 W	
	7. 14:36:00	PTS2-3-4 W	
	8. 14:45:00	PTS4 M	
	9. 14:50:00	PTS2-3 M	
	10. 15:30:00	PTWC1 M	
	11. 15:33:00	PTWC2 M (+3:00)	
	12. 15:40:00	PTWC1 W	
	13. 15:43:38	PTWC2 W (+3:38)	
Award Ceremony	17h45	Venue - Osselle	

ACCESS VENUE



ATTENTION - 15th June, limited access to the venue : follow deviations!



KEY CONTACTS

World Triathlon Technical Delegate	Terry Race	terryrace21@gmail.com +44 7710 741422
LOC Assist. Event Director	David Travadon	david.travadon@sfr.fr +33 646 12 15 92
World Triathlon Team Leader	Eric Angstadt	eric.angstadt@triathlon.org +34 610 53 30 71

EVENT CONTACT DETAILS

Local Organising Committee: Besançon Triathlon

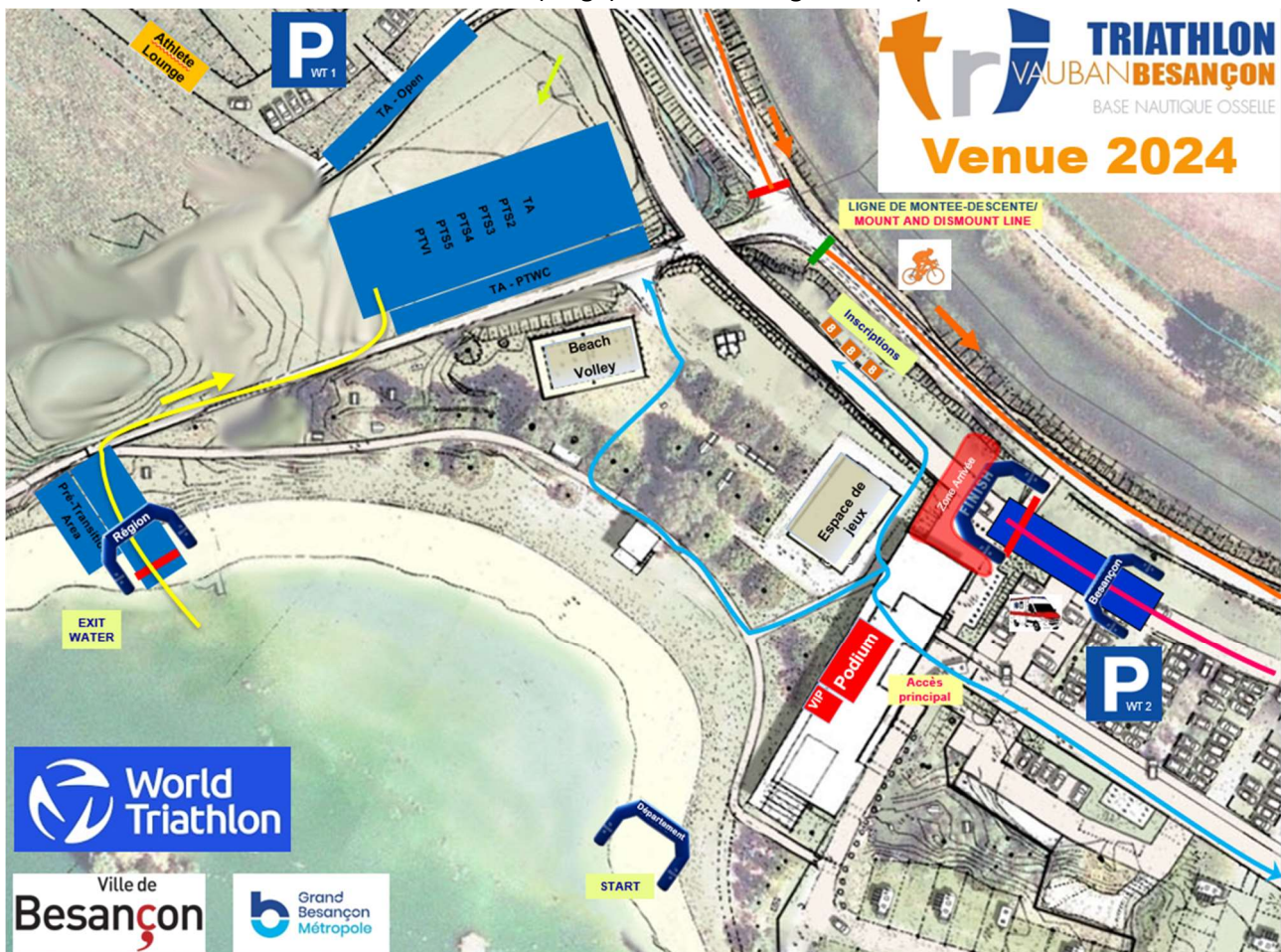
Address: Besançon Triathlon, 14 Rue de Trépillot - 25000 Besançon, France

Contact: David Travadon +33 6 46 12 15 92 - david.travadon@sfr.fr

Event Website : <https://besancon-triathlon.fr/triathlon-vauban/>

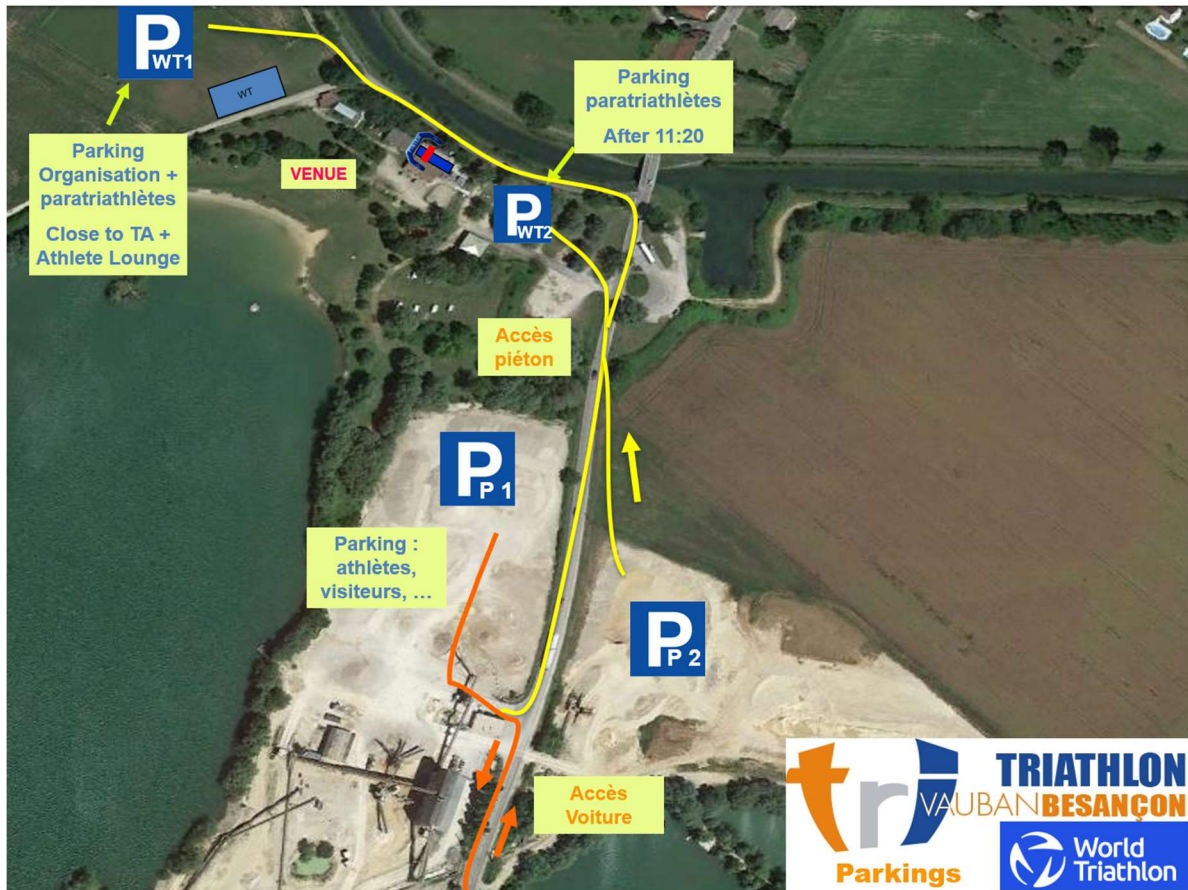
VENUE

The venue is located in the centre of Osselle (Plage). The swimming will take place at Osselle Beach.



PARKING

You will be given a ticket in the Race Package to access the parking reserved for Race athletes. **ACCESS PARKING WT1 BEFORE 11:20 a.m. – ACCESS PARKING WT2 AFTER 11:20 a.m.**, if it is full Parking Public P1 is available



You will find an access badge to the WT1 and 2 car parks in the race package.

DOPING CONTROL

Doping Control will be performed according to the World Triathlon rules at the venue.

MEDICAL SERVICES

EMERGENCY: 112 (European number)

DOCTOR : SOS Médecin tel. 36 24 (from a French landline or cell phone)

HOSPITAL:

Hôpital Jean Minjot 3 bd Alexandre Fleming 25000 Besançon

First Aid and Emergency Medical Services will be available at the venue on June 16th before and during the competition hours.

Medical and paramedical personnel will be available throughout competition times. Several ambulances will be available to provide emergency transfer to hospital. A medical tent will be provided on site at the finish area.

Possible medical services at the venue are free of charge.

Treatment in clinics and practices is to be paid by the participants.

Athletes / teams should ensure that they have appropriate medical insurance.

TRAVEL & ACCOMMODATION INFORMATION

CLOSEST AIRPORTS

- > Lyon Saint Exupery international airport (240 Km - 2h15)
<http://www.lyonaeroports.com/>
- > International airport Bâle-Mulhouse-Fribourg (160 km - 1h45) <http://www.euroairport.com/fr/>
- > Geneva international airport - Switzerland (170 km - 2h10) <http://www.gva.ch/fr/desktopdefault.aspx>

There is no official transportation from the airports to Besançon. Teams must arrange their own transportation means.

The organizer strongly recommends to the athletes to rent a car/van at the airport to access Besançon then venue « Osselle » (located at 15 minutes by car to Besançon).

ACCOMMODATION CONTACT DETAILS

Official Hotel is the Hotel Ibis Besançon la City, 1 Avenue Louise Michel 25000 Besançon - located to the city-center in Besançon (15 minutes by car to Osselle).

Booking through the following contact :

- Phone : (+33) 381 851 177
- Email : H3297@ACCOR.COM
- Website : <http://www.ibis.com/qb/hotel-3297-ibis-besancon-la-city/index.shtml>

More information

Mr Stephane HOTTON, the manager of the Ibis Besançon La City Hotel, would like to welcome you.

A few steps away from the historical and commercial center of Besançon, this hotel offers 119 air-conditioned rooms, free Wifi access and foreign channels (English, Italian, Chinese,...). Ideally located on the banks of the Doubs river, come and stay at the IBIS Besançon la City hotel to stroll through the old town and the parks, Visit the home of birth of Victor HUGO or discover the VAUBAN fortifications and the citadel Of Unesco. The bar is open 24 hours and the "Tavern of Master Kanter" where you can taste seafood, traditional and regional dishes.





Hôtel Ibis Besançon la City

1 Avenue Louise Michel
25 000 Besançon

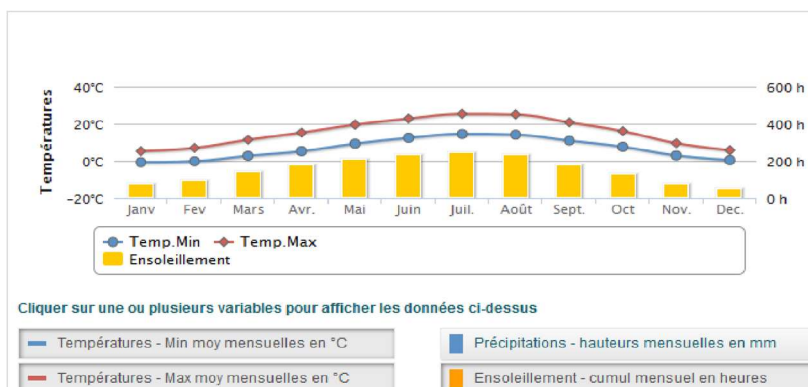
SPORT SHOPS

- > Swim, Bike and run shop : **Intersport 20 rue Auguste Jouchoux 25000 Besançon – +333.81.47.43.00**
- > **Bike shop** : Cycles des Salines – 1 rue Jean Monnet 25410 Saint-Vit (10 minutes to the Venue)
- > **Bike shop** : Boulevard Cycle, 154 rue de Dole, Besançon - +333.81.51.88.16

WEATHER

Weather forecast for June :

- water temperature: wetsuit expected
- min temperature : 12°C
- max temperature: 22°C



TRAINING

TRAINING SESSIONS

SWIMMING POOLS

2 swimming pools in Besançon are available closed to the hotel during their opening hours :

- Piscine La Fayette (http://www.besancon.fr/index.php?p=812&art_id=5294)
- Piscine Mallarmé (http://www.besancon.fr/index.php?p=812&art_id=2379)

Additional to this, the organizer is pleased to propose free access for the paratriathletes to the swimming pool named “ Piscine Mallarmé”: Thursday evening from 7.30 pm to 8.45 pm,

OSSELLE BEACH (venue)

Osselle beach is open every Wednesday from 10 a.m. to 7 p.m. (free access for athletes).

A training session is possible on Thursday June 15 from 4 to 6 p.m.

Outside of these slots, the base is closed and the access is prohibited.

COURSE FAMILIARIZATION

Familiarization will be organized Friday from 14:00 am in Osselle :

- 13:00 Transportation from Ibis Hotel to the venue
- 14:00 Start Bike familiarization (1 lap guided)
- 15:00 Swim familiarization
- 16:00 Transportation from the venue to the Ibis hotel

If you need transportation to go to Osselle (the Venue) please register before 1st June 2024 :

https://docs.google.com/forms/d/e/1FAIpQLSdHUQta9aLsjBHYM1HK9J1kl4YZMvVeygSRup6jE2ay6GLmzg/viewform?usp=sf_link

In addition, these roads are accessible any time if you want to recognise the course alone.

Please note: The road is not closed to traffic apart during the event. You are running/cycling at your own risks by following the traffic regulations.

COMPETITION INFORMATION

Friday June 14th

- 13:00** Transportation from the Ibis La city hotel to Osselle ([Registration required *](#))
- 14:00** Bike Familiarization
- 15:00** Swim Familiarization
- 16:00** Shuttle Departure to the Ibis La City hotel

Esplanade Chamars

- 17:30** Athlete Presentation

Centre diocésain

- 18:00** Entry Fee payment (Cash Only)
- 18:30** Briefing
- 19:30** Athlete Registration – Race Package
- 19:45** Pasta Party

Saturday June 15th

- 11:00** Transportation from the Ibis La City hotel to Osselle ([Registration required *](#))

11:20 Access to the Parking 1 close

- 11:30** Distance XS – Benjamins – Minimes
- 11:32** Distance XS – Femmes
- 11:34** Distance XS – Hommes + relais
- 11:36** Distance XS – Paratriathlon Open wave
- 13:00** Youth Race 8 - 12
- 13:30** Medal Ceremony Distance XS + Youth Race 8-12
- 14:05** Athlete presentation

14:15 World Triathlon Para Cup – Waves

- 1. 14:15:00 PTS5 M**
- 2. 14:20:00 PTVI1 M**
- 3. 14:22:41 PTVI2/3 M (+2:41)**
- 4. 14:24:00 PTVI1 W**
- 5. 14:27:11 PTVI2/3 W (+3:11)**
- 6. 14:35:00 PTS5 W**
- 7. 14:36:00 PTS2-3-4 W**
- 8. 14:45:00 PTS4 M**
- 9. 14:50:00 PTS2-3 M**
- 10. 15:30:00 PTWC1 M**
- 11. 15:33:00 PTWC2 M (+3:00)**
- 12. 15:40:00 PTWC1 W**
- 13. 15:43:38 PTWC2 W (+3:38)**

- 17:45** Medal Ceremony WTPC

- 18:15** Shuttle Departure to the Ibis La City hotel

Sunday June 16th

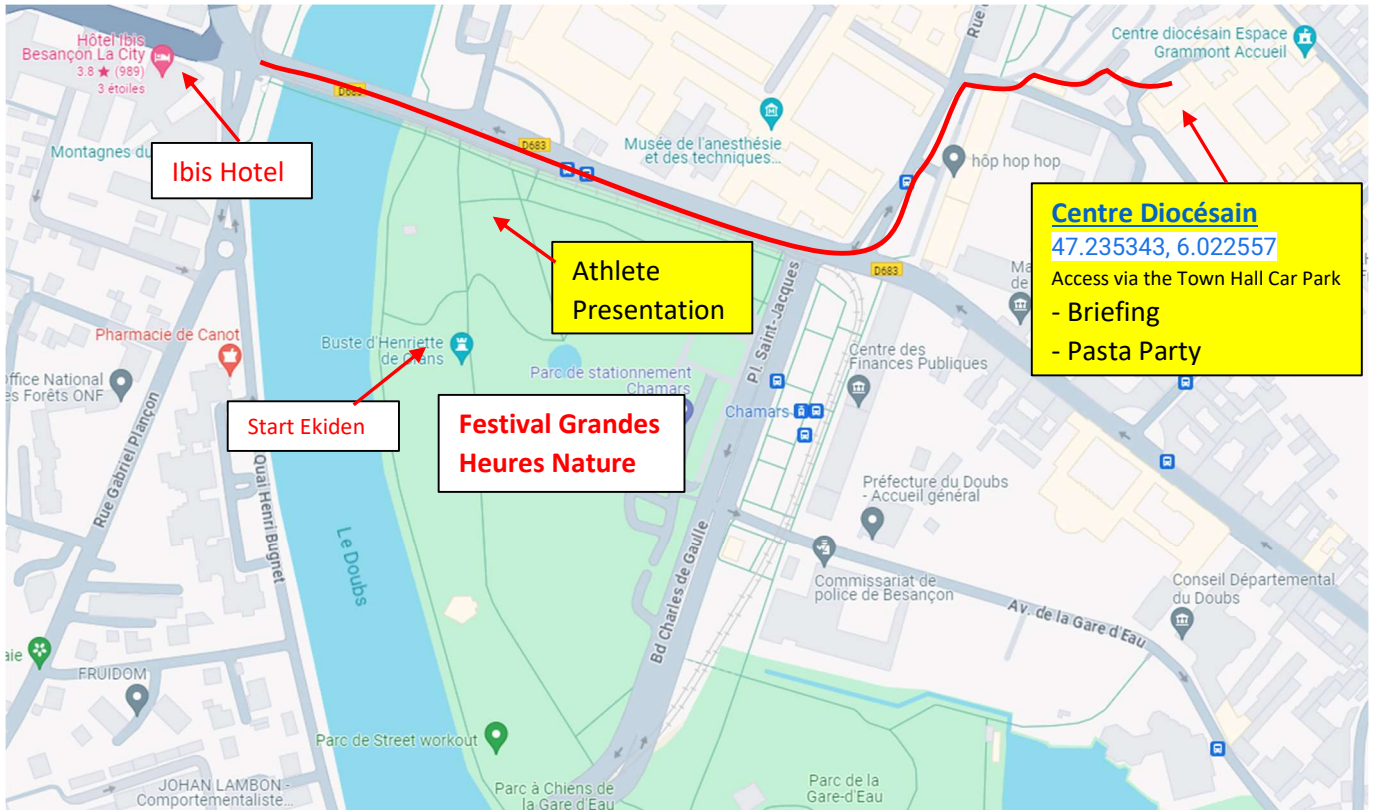
- 09:00** Distance M Time trial /team (1.5km swim – 38km bike – 10km run)
- 10:00** Distance S - Mass Start Individual + Relay
- 12:30** Medal Ceremony Dist. M & S

*** Registration Shuttle Bus Besançon <-> Osselle :**

https://docs.google.com/forms/d/e/1FAIpQLSdHUQta9aLsjBHYM1HK9J1kI4YZMvVeygSRup6jE2ay6GLmzg/viewform?usp=sf_link

Entry Fee : 50 € - Cash only. All athletes will have the Pasta Party offered, additional Pasta Party ticket : 15 €

Free bibs for the Sunday races : Distance M (Team Time Trial) or Distance S (Individual or relay) are offered to World Cup athletes (except PTWC). Interested athletes contact David: david.travadon@sfr.fr (registration before June 1st)



COMPETITION RULES

The race will follow the latest published competitions rules of the World Triathlon: http://www.triathlon.org/about/downloads/category/competition_rules

Please note that the athlete's uniform, and his/her Guide if applicable, have to be in line with the World Triathlon Competition rules.

ENTRY

World Triathlon Para Cup

Athletes have to be registered by their National Federation through World Triathlon.

Entry fee = 50 € will have to be paid **only by cash** just before Athlete Registration and Race Package.

RACE PACKAGE DISTRIBUTION

Centre Diocésain (Access via the town hall car park) - 47.235357, 6.022912

Friday June 14th :

- 18h00 Entry Fee Paiement (50 € - Cash Only)
- 18h30 Briefing World Triathlon Para Cup
- 19h30 Athlete Registration – Race Package distribution
- 19h45 Pasta Party

COURSE MAPS

SWIM COURSE - 1 lap of 750 m



BIKE COURSE - 1 Lap of 10,75km + 1 Lap of 8,8km + 1,8 km = 21,35km (Elevation : 85 m/lap = 170 m)



RUN COURSE - 0,2km + 2 laps of 2,3km + 0,2 km = 5km



RESULTS

Results will be uploaded few hours after the race at the World Triathlon official website :

https://triathlon.org/events/event/2024_world_triathlon_para_cup_besancon

PROTEST & APPEAL S

The race referee will post penalties, and DSQ if applicable, at the post finish / recovery area.

For either a protest or an appeal, World Triathlon rules will be followed. The appeal or protest has to be submitted to the HeadReferee and the World Triathlon Competition Jury will meet to discuss it.

The full rules for appeal can be found using the following web link :

http://www.triathlon.org/about/downloads/category/competition_rules

WATER QUALITY ANALYSIS

Water quality analysis pending ...

WATER QUALITY ANALYSIS – E. COLI

Date of Sample	Localisation A	Localisation B	Localisation C	Enterococci Limit
22/05/23				

WATER QUALITY ANALYSIS – ENTEROCOCCI

Date of Sample	Localisation A	Localisation B	Localisation C	Enterococci Limit
22/05/23				

WATER QUALITY ANALYSIS – PH

Date of Sample	Localisation A	Localisation B	Localisation C	PH Limit
22/05/23				

SUMMARY

Good quality water for swimming