



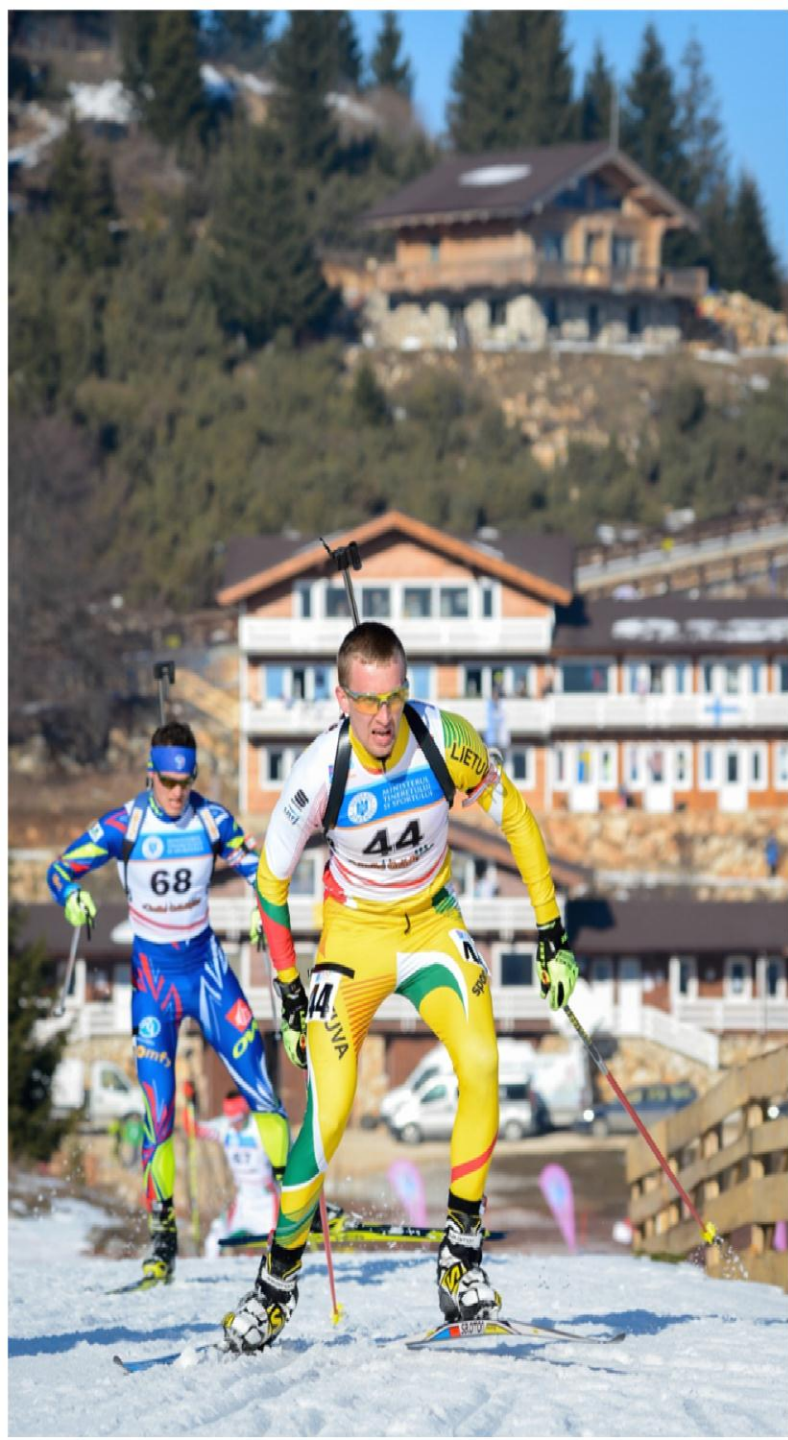
**Cheile Gradistei**  
**host of ETU Winter Triathlon European**  
**Championship 2017**





# Summary

- Brief page 3
- Major international events held at Cheile Gradistei page 4
- An idea about the track page 5
- Facilities page 7
- Surrandings page 13
- Cheile Gradistei ETU Winter Triathlon European Championship page 14
- Contact page 15



- Cheile Gradistei is a holiday complex situated in Bran region, at 180 km from Bucharest, the capital city of Romania.
- The holiday complex includes a biathlon and cross country skiing base in Cheile Gradistei Fundata. At 1,300 m altitude, surrounded by mountains the base was developed in an amazing natural landscape.
- At meters away from the cross-country skiing track it is a sports hall used as well for different ceremonies.
- All the facilities from Cheile Gradistei Fundata are at a few hundred meters from the Biathlon Arena. The restaurant, for example, is at 150 meters away from the athletes cabins and officials rooms.
- During the year, Cheile Gradistei is a place where many Olympic athletes come for physical training (summer and winter disciplines).
- The most known tourist attraction near to us it is Bran Castle, the one known as Dracula's Castle.

## Brief



# Major international sport events held at Cheile Gradistei

- 2013 European Young Olympic Winter Festival;
- 2015 International Biathlon Union - Summer Biathlon World Championships;
- 2016 International Biathlon Union – Youth and Junior World Championship;
- 2016 Federation International de Ski – Nordic Junior & Cross-Country U23 Ski World Championships.

In January and February 2016 during the IBU and FIS events, we hosted in our holiday complex hundreds of athletes from around the world including top teams like: Sweden, Norway, Russia, USA, France, Switzerland, or countries who discover now the winter sports, like Brazil.

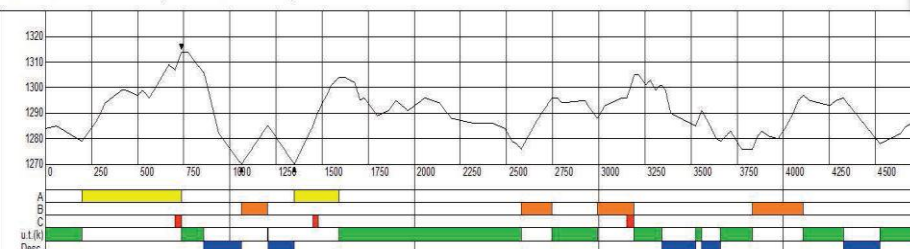


# An idea about the track

The cross-country skiing track has  
several configurations  
homologated by F.I.S. and here you  
can see the 5 and 3.3 km versions.



Cheile Grădiștei 5km JWSC			
Course length:	4735m	Height Difference (HD):	44m
Category:	C	Maximum Climb (MC):	42m
Competition Level:	JWSC	Total Climb (TC):	192m
		Lowest point:	1270m
		Highest point:	1314m



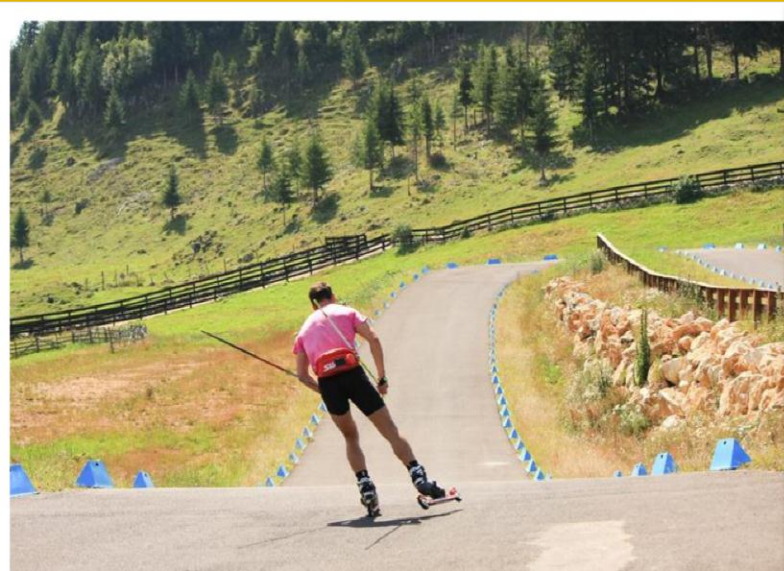
In the Arena Biathlon you will find  
cabins for the athletes, Race control  
room, Media room, VIP room etc –  
the track is visible from all the cabins  
and rooms.



# Homologated tracks

Arena Biathlon Cheile Gradistei has homologated I.B.U. tracks for: 4 km, 3.3 km, 2.5 km and 1.5 km, and F.I.S. for: 5 km, 3.3 km, 2.5 km, 1.7 km, 1.5 km, 1.3 km.

We have also a 3.3 km tarmac (asphalt) track homologated by I.B.U. for summer biathlon (roller skiing) .



# Facilities

- Cheile Gradistei Moeciu and Cheile Gradistei Fundata, the two locations who form Cheile Gradistei holiday complex, can accommodate a total of 800 guests. The two locations are connected by a 5 km road and during the events (if it is necessary), shuttle buses are taking the athletes from Cheile Gradistei Moeciu to Cheile Gradistei Fundata, where it is the biathlon and cross-country arena.



## Restaurants

- We serve an international menu with accent on Romanian traditional dishes and we can prepare special menus for the athletes.



## **Pub and Tea Shop at Cheile Gradistei Fundata**

Located on the upper floor of the restaurant, the pub is the perfect place for socializing or leisure.

Here you can enjoy a fine drink, you can play table tennis, billiard, darts, karaoke or you can enjoy your coffee admiring the landscape.

Near the restaurant, in a friendly atmosphere, the Tea Shop welcomes you with a selection of fine teas and coffee, books and souvenirs. If it is a sunny day, you can drink your tea outside while admiring the Ridge of Bucegi Mountains.





## Sports Hall

The main sports hall can hold sports games competitions such as volleyball, handball, football, basketball, etc. but also ceremonies. The capacity it is between 700 and 1,200 seats in the stands.



# GYM

We have a gymnastics hall with mattresses, a cross-country skiing and biathlon simulators, a fitness room and also a weight room with professional equipment special for heavy athletics (wrestling, judo, weight lifting etc.), techno gym weight equipment, 5 weight lifting platforms etc.





## SPA Center

Both location from Cheile Gradistei (Fundata and Moeciu) have a SPA center. You will find swimming pool, Jacuzzi, wet sauna, dry sauna, and massage.



Meeting rooms which can  
accommodate up to 1000 persons







## Surroundings

Situated at 1,300 m altitude Cheile Gradistei Fundata and the Biathlon and Cross-Country Skiing Arena is surrounded by two important mountains: Bucegi and Piatra Craiului. The Ridge of Bucegi and The Ridge of Piatra Craiului give the beauty of the landscape. Near to us it is a traditional mountain village and tourist are doing tracking session to see old mountain houses in Fundata.

At only 15 km from Cheile Gradistei Fundata you find Bran Castle – a medieval fortress known as Dracula Castle. Near it is the city of Rasnov with another medieval fortress and the city of Brasov, the capital of the county where is located our holiday complex.



# Cheile Gradistei ETU Winter Triathlon European Championship

*It will be an honor and a great challenge for us to host the ETU Winter Triathlon European Championship in 2017. We saw how triathlon is a sport who grows constantly and we are happy that he becomes more and more popular in Romania as well.*

*When we started the project Cheile Gradistei Fundata Bithlon and Cross-Country Skiing Arena we knew from the start that this is a polyvalent base and that we want to have many and different competitions held in our complex.*

*ETU Winter Triathlon European Championship is a major event for us and we will do our best to be a host that this championship deserve.*

*We will support as much as we can the media coverage and marketing part of the event.*

*Competition date:*

*Considering the quantity of snow, we propose the last week of January and the entire month of February – except the week when is going to be the secondary school students holiday; we wait to see the exact date but probably is going to be between 21 and 25 of February.*

*Hope you will soon visit us and see the area that we are sure will be a delight for the triathletes.*





You can watch a short video with Cheile Gradiștei Biathlon Arena  
created as a teaser for the IBU event held in January 2016 by accessing:  
<https://www.facebook.com/IBUYJWCH2016/videos>

Thank you for your time.

Alexandru Garbacea, Mobile phone: +40757.327.881, email: [alex@cheilegradistei.ro](mailto:alex@cheilegradistei.ro)







ACHEILE GRADISTE